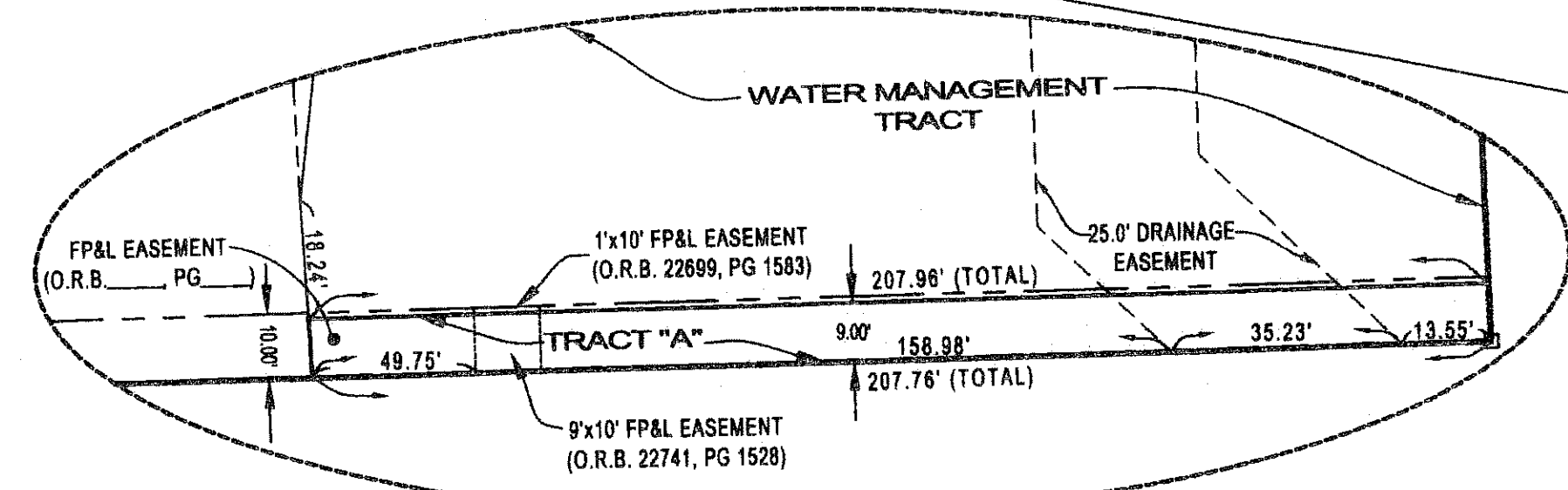
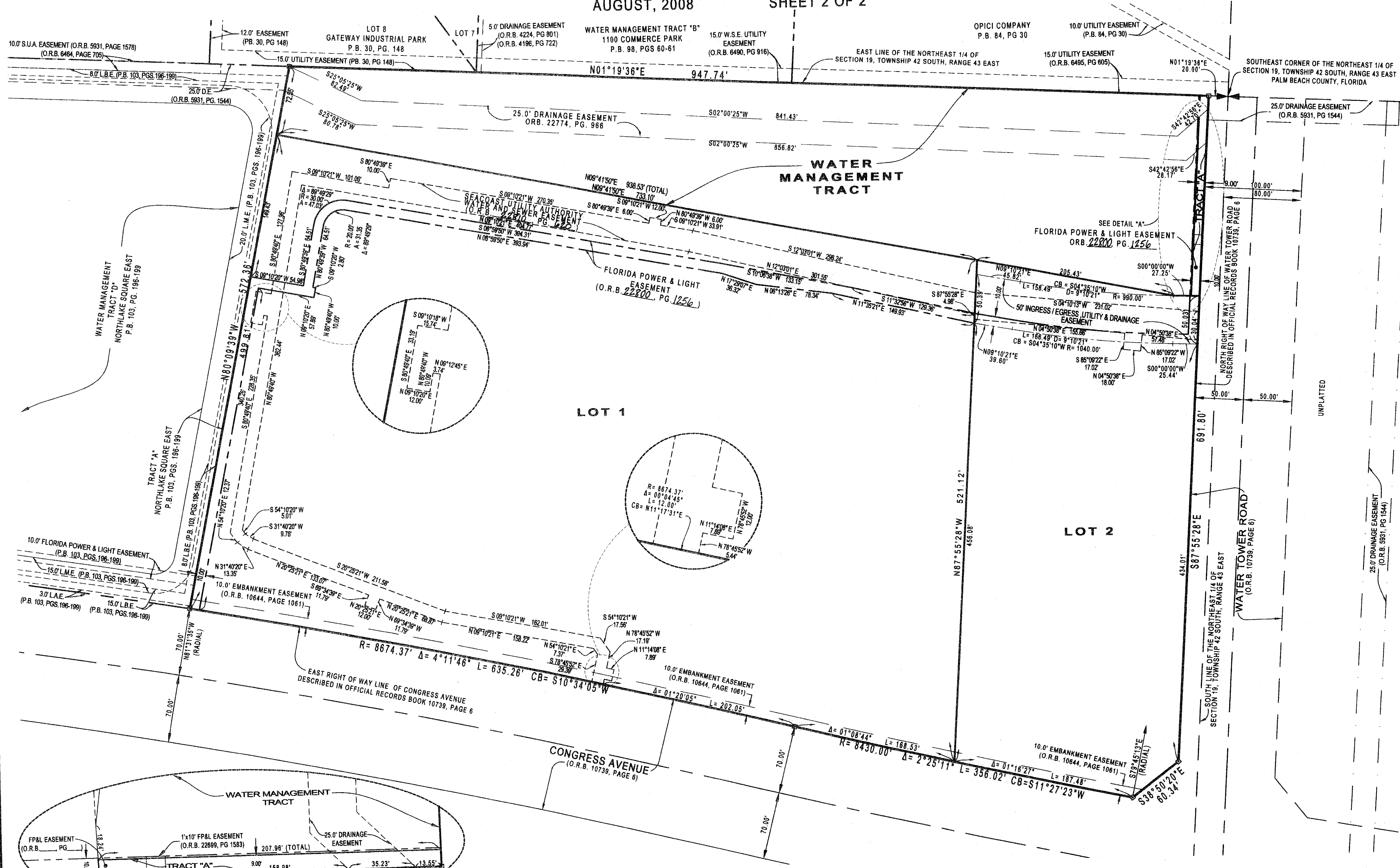


CONGRESS AVENUE RETAIL

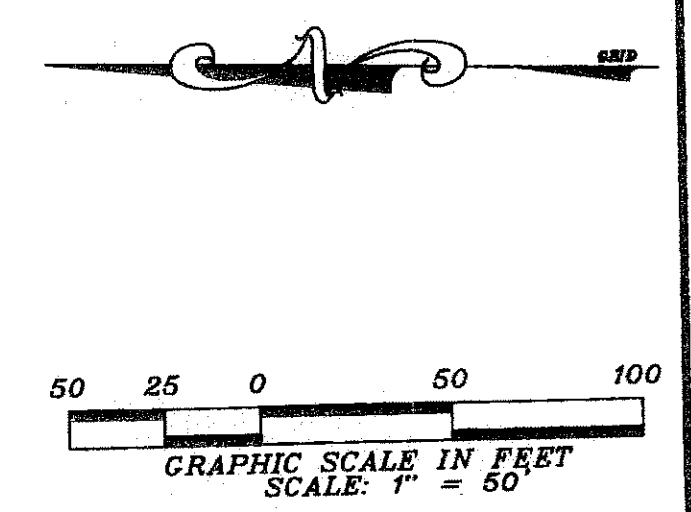
BEING A PARCEL OF LAND LOCATED IN THE NORTHEAST QUARTER OF
SECTION 19, TOWNSHIP 42 SOUTH, RANGE 43 EAST
TOWN OF LAKE PARK
PALM BEACH COUNTY, FLORIDA
AUGUST, 2008 SHEET 2 OF 2

118

STATE OF FLORIDA
COUNTY OF PALM BEACH
This plat was filed for
record at _____ M. this day
of _____, 2008 and duly
recorded in Plat Book No. _____
on Pages _____ thru _____
Sharon R. Bock
Clerk and Comptroller
By _____ D.C.



DETAIL "A"
NOT TO SCALE



LIDBERG LAND SURVEYING, INC.
676 West Indianum Road, Suite 200,
Jupiter, Florida 33458 TEL: 561-746-8464

CAD K:\AUTOCAD2000\194243\01-059\DWG\01-059-306.DWG			
REF			
FLD	FB	PG	JOB 01-058 (306)
OFF	J.K.O.		DATE 12/18/2007
CKD	D.C.L.	SHEET 2 OF 2	DWG 061-059P